

ePowerSwitch 1 Guard



ePowerSwitch 1G Guard is a power control unit that enables remote power control of one device over Intranet, Internet or locally through an RS-232 serial connection. It also allows you to monitor one IP device (server, router, camera...) and automatically reboot it in case of lock-up.

On, off and restart functions

The power outlet can be turned On/Off or restarted over IP or through an RS-232 serial connection.

IP device monitoring

The Watchdog function lets you monitor one IP device with specific service or port (server, router, camera...). In case of lock-up of the monitored device, this one can be automatically rebooted.

IP Security

Two password levels: the administrator password allows configuration and access to the power outlet and the user password allows only access to the power outlet.

4 security masks allow you to grant or deny access to only a specific IP address or a group of IP addresses.

Restart delay

The restart delay of the power outlet can be set between 5 and 60 seconds.

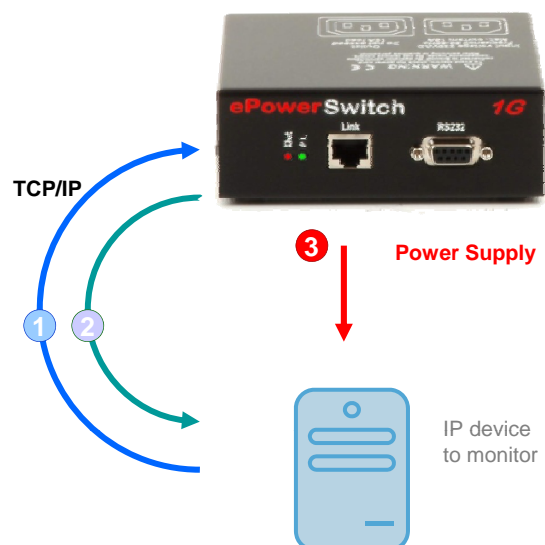
Programmable labels

To avoid confusion during operation, you can attribute a 32-character label to each device and power outlet.

Easy configuration

The configuration can be done through a standard web browser, a serial console interface or a convenient Windows tool which provides an easy and quick way to configure your ePowerSwitch especially by the first settings of the Network parameters.

- 1 ePowerSwitch sends a Ping / Scan request.
- 2 The monitored device acknowledges the request.
- 3 The monitored device is automatically rebooted in case of lock-up.



ePowerSwitch 1G Guard



Benefits

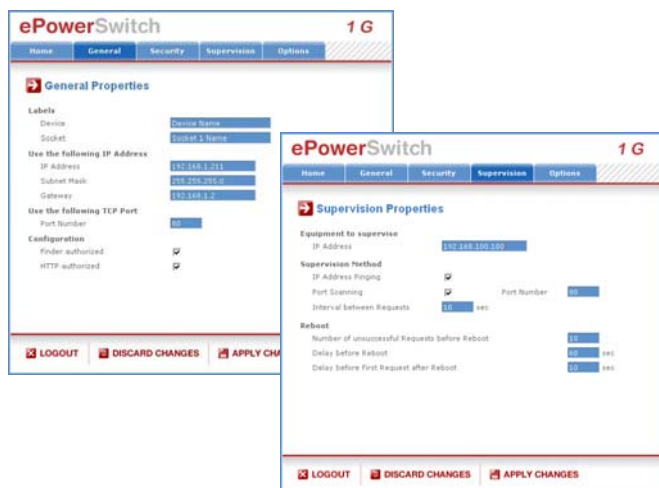
- Remote power control of one power outlet.
- Remote control and administration over IP and RS-232.
- IP device monitoring with automatic reboot function in case of lock-up.
- Access protected by names and passwords (1 administrator and 1 user account).
- Free definable labels for the device and the power outlet.
- Easy and fast configuration.
- Very compact metallic casing.
- Firmware updateable over the LAN.



Front side / Back
Very compact metallic casing

Web Pages

The settings for the Web Server and the control of the power outlet are organized by an easy to use set of tabs.



What's included

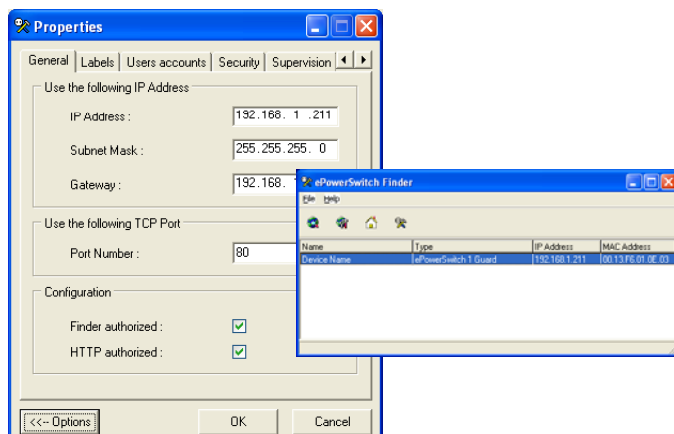
- ▶ 1 EPS 1G-XX (XX specifies the delivered power cable)
 - ▶ 1 power cable, 1,8 meter IEC-320-C13 / EU, CH or UK standard
- EU = Schuko/Europe, CH = Swiss, UK = United Kingdom
- ▶ 1 serial cable (SUB-D9 male/female) 1,80 meter
- ▶ 1 CD-ROM with user guide in English and Windows IP configuration tool

Technical features

- ▶ 1 power input: IEC 320 EN 60320 C14 (M) 10 A
 - ▶ Nominal input voltage: 230 V/50Hz
 - ▶ Maximum current: 10A
- ▶ 1 power output: IEC 320 EN 60320 C13 (F)
 - ▶ Output voltage: 230 V/50Hz
 - ▶ Maximum current/outlet: 10A
- ▶ Network standards: IEEE 802.3, 10BASE-T
 - ▶ Network protocols: TCP/IP, HTTP
 - ▶ Network connection: RJ-45 for UTP CAT5
- ▶ Max.network cable length: 100 m (not included)
- ▶ Terminal connection: RS-232, SUB-D 9 female
 - ▶ Connection Bus: RS-485, RJ-45
- ▶ LED's: power and network traffic socket status
- ▶ Operating temperature: 0°C to + 40°C
- ▶ Operating humidity: 10% to 80%
- ▶ Dimensions: 230 x 112x 42mm
 - ▶ Weight: 1 kg
- ▶ Approvals: CE, EN55022 & EN55024, RoHS
 - ▶ Guarantee: 2 years repair or replace

Windows configuration tool

This convenient Windows program provides an easy and quick way to configure your ePowerSwitch especially by the first settings of the Network parameters.



Distributor :