

ePowerSwitch 4



ePowerSwitch 4 is a power strip that enables remote power control of 4 devices over a TCP/IP or a serial connection. It can be used for remote control of the power supply of PC's, servers and routers but also for SOHO applications. It is available with the main used power outlets in Europe and can be mounted in a 19" rack. The supplied wall mount kit enables to fix the power strip against a wall.

On, off and restart functions

Each power outlet can be turned On/Off or restarted over IP or through an RS-232 serial connection.

IP Security

Two Password levels: the administrator password allows configuration and access to all power outlets and 4 user passwords allow access only to the power outlets for which the user has the rights.

4 security masks allow you to grant or deny access to only a specific IP address or a group of IP addresses.

Restart delay

The restart delays of the power outlets can be set individually between 5 and 60 seconds.

Sequential power up/down

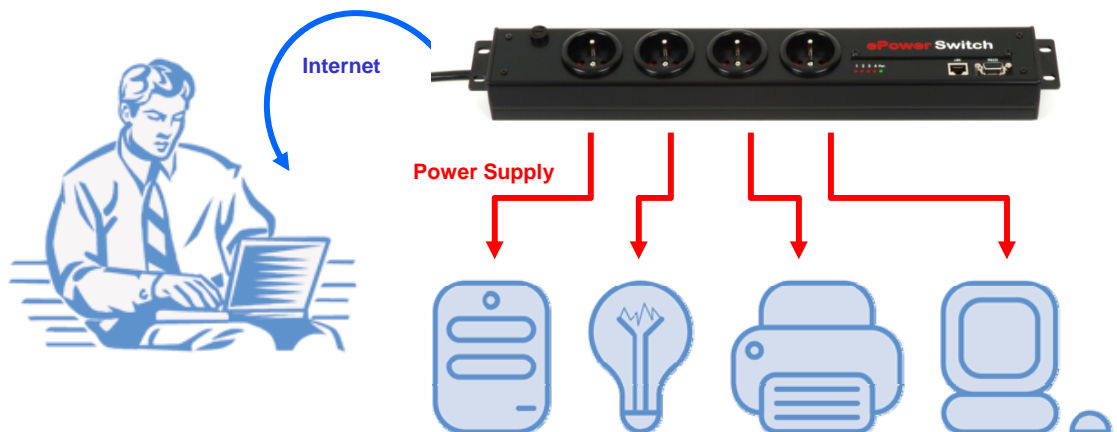
Avoids the risk for a power inrush to blow a fuse or circuit breaker in the data centre.

Programmable labels

To avoid confusion during operation, you can attribute a 32-character label to each device and power outlet.

Configuration

The configuration can be done through a standard web browser, a serial console interface or a convenient Windows tool which provides an easy and quick way to configure your ePowerSwitch, especially by the first settings of the network parameters.



Powerstrip ePowerSwitch 4



Benefits

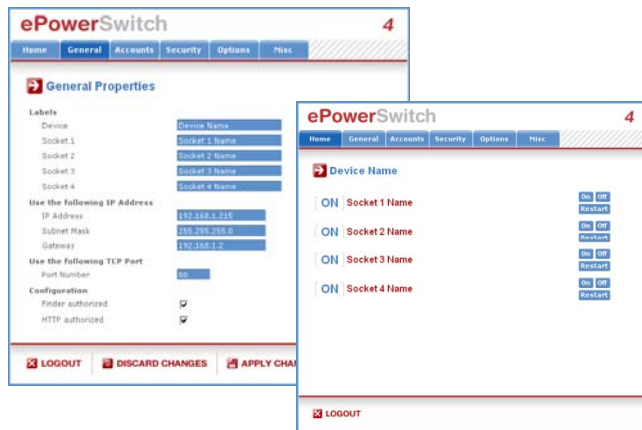
- Remote power control of 4 outlets.
- Control and administration over IP and RS-232.
- Wide range of country-specific power outlets.
- Access protected by names and passwords (1 administrator and 4 user accounts).
- Power-up sequencing avoids in-rushes currents at start-up.
- Free definable labels for the device and each power outlet.
- Easy and fast configuration.
- Status LEDs for power input, network and power outlets.
- Firmware updateable over the LAN.



Power strip for 19" rack mounting (wall mounting kit optional)

Web Pages

The settings for the Web Server and the control of the power outlets are organized by an easy to use set of tabs.



What's included

- ▶ 1 Power Strip 19" rack mountable model + 1 wall mounting kit
- Ref: EPS-4 F 19 EPS-4 D 19 EPS-4 E 19 EPS-4 C 19



French



German (Schuko)



English



Swiss

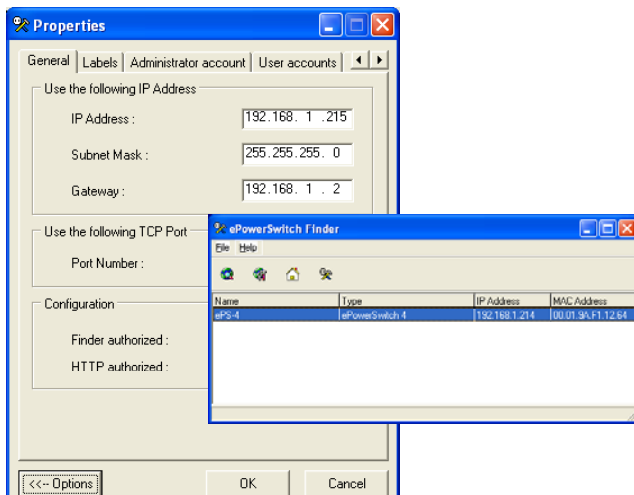
- ▶ 1 serial cable (SUB-D9 male/female) 1,80 m
- ▶ 1 CD-ROM containing user guide in English and Windows IP configuration tool

Technical features

- 1 input power socket: FR, DE, EN or CH power outlet (see above diagrams) 10 A
 - ▶ Nominal input voltage: 230 V/50Hz
 - ▶ Maximum current: 10A
- ▶ 4 outputs power socket : FR, DE, EN or CH power outlet (see above diagrams)
 - ▶ Output voltage: 230 V/50Hz
 - ▶ Maximum current/outlet: 10A
- ▶ Network standards: IEEE 802.3, 10BASE-T
 - ▶ Network protocols: TCP/IP, HTTP
 - ▶ Network connection: RJ-45 for UTP CAT5
 - ▶ Max.network cable length: 100 m (not included)
- ▶ Terminal connection: RS-232, SUB-D 9 female
 - ▶ Connection Bus: RS-485, RJ-45
- ▶ LED's: power and network traffic socket status
- ▶ Operating temperature: 0°C to + 40°C
 - ▶ Operating humidity: 10% to 80%
 - ▶ Dimensions: 478 x 73 x 49 mm
 - ▶ Weight: 1 kg
- ▶ Approvals: CE, EN55022 & EN55024, RoHS
- ▶ Guarantee: 2 years repair or replace

Windows configuration tool

This convenient Windows program provides an easy and quick way to configure your ePowerSwitch especially by the first settings of the Network parameters.



Distributor :

All modifications reserved
EPS-4 Datasheet 2009 084