

ePowerSwitch 8XM



ePowerSwitch 8XM is an enhanced power distribution and control unit that enables remote power management of 8 devices (extendable up to 136) over the Internet. This high security device supports the SSL protocol and also includes IP device and environmental monitoring functionalities. It supports the HTTP, HTTPS, DHCP, Syslog, SNMP, SMTP and SNTTP protocols. An internal clock allows to timestamp the syslog messages, e-mails and internal logs, and can be used to trigger time-controlled actions.

Remote power management

Each power outlet can be turned On/Off or restarted over IP. The number of controlled outlets can be extended up to 136 by cascading 16 Satellite units 1-port or 8-port.

Two separate AC power inputs

To improve the security and increase the total current load, the ePowerSwitch-8XM supports dual power inputs (up to 10 Amps each). The first one provides power for outlets 1 to 4 and the second one for outlets 5 to 8. This feature is ideal for power management of servers with redundant power supplies.

Power outlet grouping

Up to 255 groups of outlets from the Master and any Satellites can be created to control multiple power supply servers and many devices with a single command.

Easy configuration

Full configuration can be performed through the Web using http or https. The network settings can also be done via a convenient tool or a Terminal connection.

DHCP Client

The DHCP option enables to simplify the network configuration management.

Access and accounts

The administrator password allows complete configuration and control of all power outlets. The administrator can create up to 255 user accounts with restricted rights.

Multiple concurrent users

255 users can have a concurrent access to the Master and all Satellites and control their designated power outlets.

Advanced security

For your security, account access and data transfer can be encrypted with SSL technology.

Programmable restart and power-up delays

The restart delay (1-65535 seconds) and the power-up delay (1-3600 seconds) can be set individually for each power outlet.

Sequential power up/down

Avoids the risk for a power inrush to blow a fuse or circuit breaker in the data centre.

Scheduler for time-controlled applications

This time-controlled function is used to schedule actions according to a defined time table. It lets you control power outlets and dry contacts and allows to send Emails.

IP device monitoring

A Watchdog function lets you monitor IP devices with automatic reboot in case of lock-up of the monitored device.

Environment monitoring

This function lets you monitor temperature, humidity and light in racks or server rooms. If thresholds are exceeded, power outlets and dry contacts can be automatically controlled and Email/Syslog messages/SNMP traps sent.

Dry contacts monitoring

The I/O Extension Board with 8 inputs for dry contacts let you monitor magnetic door contacts, smoke or water detectors.

Improved log file reporting

Event logs are written to the internal log file and can be sent to a primary and a secondary Syslog Server and to an Email address.

Programmable labels

To avoid confusion during operation, you can attribute a 32-character label to each device and power outlet.

ePowerSwitch 8XM



Benefits

- Remote power control of 8 to 136 power outlets over IP.
- SSL 128-bit technology.
- Dual power input + auxiliary power supply (12 VDC) for the Web server.
- Access protected by 32-character names and passwords (1 administrator and up to 255 user accounts).
- Outlet grouping (any number).
- Power-up sequencing avoids in-rushes currents at start-up.
- Free definable labels for the device, each power outlet, groups, rules...
- Programmable restart and power-up delays.
- Up to 255 rules: IP device, dry contact and power supply monitoring, environmental monitoring (temperature, humidity...) and schedule rule.
- Easy and fast configuration.
- Occupies only 1U of rack space.
- 8 dry contacts inputs, 4 dry contacts output over I/O extension module.
- Firmware updateable over the LAN.

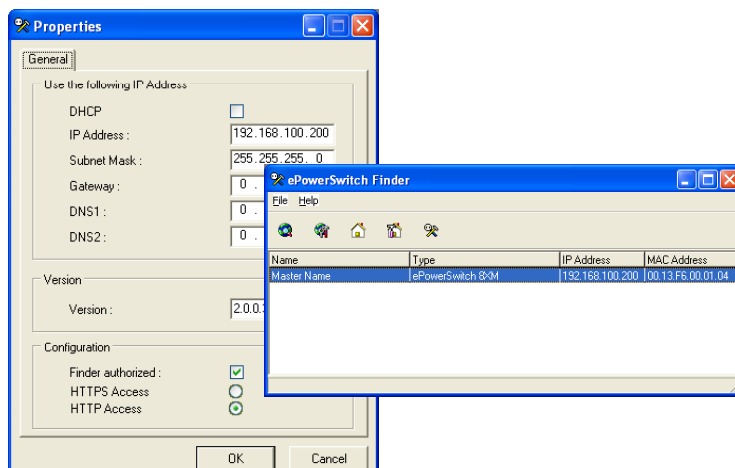
Web Pages

The settings for the Web Server and the control of the power outlets are organized by an easy to use set of tabs.



Windows configuration tool

This convenient Windows program provides an easy and quick way to configure your ePowerSwitch especially by the first settings of the Network parameters.



Front side / Back

A series of front-panel LEDs provide quick status view. 2 separate AC inputs allow power managing of devices with redundant power supply and a total load of 20 Amps / 230 V.

What's included

- ▶ 1 EPS 8XM-XX (XX specifies the delivered power cable)
 - ▶ > 2 power cables, 1,80 meter
- IEC-320-C13 / EU, CH or UK standard
 - EU = Schuko/Europe, CH = Swiss, UK = United Kingdom
- ▶ 1 power adapter for web server auxiliary power supply
 - ▶ 1 serial cable (SUB-D9 male/female) 1,80 meter
 - ▶ 1 CD-ROM with user guide in English and Windows IP configuration tool

Technical features

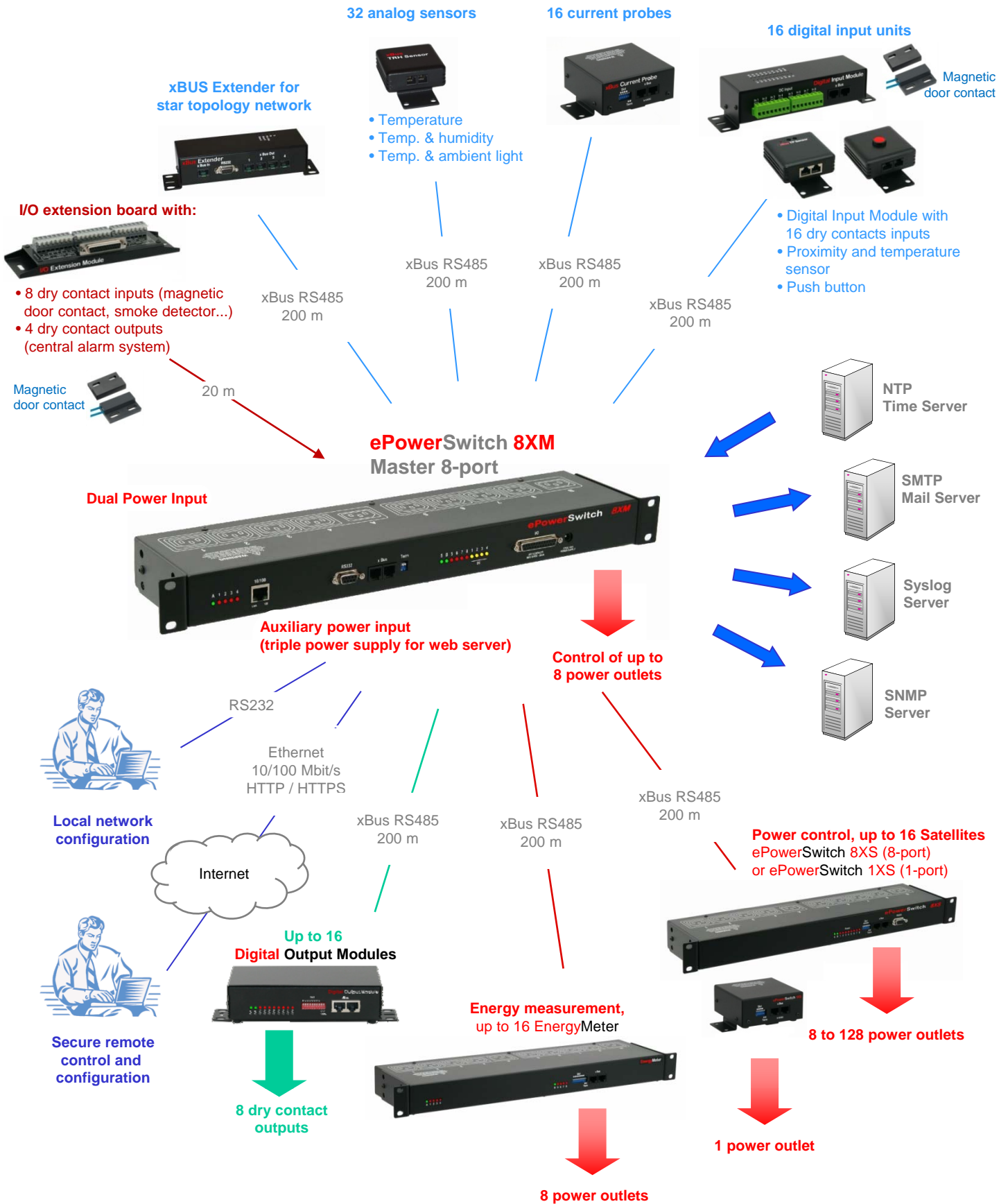
- ▶ 2 power inputs: IEC 320 EN 60320 C14 (M) 10 A
 - ▶ Nominal input voltage: 230 V/50Hz
 - ▶ Maximum current/outlet: 10A
- ▶ 8 power outputs: IEC 320 EN 60320 C13 (F)
 - ▶ Output voltage: 230 V/50Hz
 - ▶ Maximum current/outlet: 10A
- ▶ Network standards: IEEE 802.3, 10/100BASE-T
 - ▶ Network protocols: TCP/IP, HTTP, HTTPS
 - ▶ SSL technology: Version 2 and 3
 - ▶ Network connection: RJ-45 for UTP CAT5
- ▶ Max. network cable length: 100 m (not included)
- ▶ Serial connection: RS-232, SUB-D 9 female
 - ▶ Connection Bus: RS-485, RJ45
- ▶ LED's: power supplies, network traffic socket status, dry contacts output status
 - network speed 10/100 Mbits/s
- ▶ Operating temperature: 0°C to +40°C
 - ▶ Operating humidity: 10% to 80%
 - ▶ Dimensions: 437 x 107 x 42 mm
 - ▶ Weight: 2 kg
- ▶ Approvals: CE, EN55022 & EN55024, RoHS
 - ▶ Guarantee: 2 years repair or replace

Distributor :

All modifications reserved
EPS-8XM Datasheet 2010 05

ePowerSwitch 8XM

Applications



I/O Extension Module



This I/O extension module can be connected directly to the ePowerSwitch 8XM for an easy connection of external active components.

8 dry contact inputs and 4 dry contact outputs

A 24-pin cage clamp connector enables a tool-free snap-in connection to the 8 dry contact inputs (for smoke detector, door contact...) and to the 4 dry contact outputs (for centralized alarm monitoring...).

Easy connection

A 25-pin SUB-D connector enables an easy connection to the I/O interface of the ePowerSwitch 8XM using a standard extension cable.

Intended for:

Included:

1.80 m connection cable to ePowerSwitch 8XM

ePowerSwitch 8XM



20 m

I/O Extension Module



20 m

4 dry contact outputs
- centralized alarm

20 m



8 dry contacts inputs:

- smoke detector, door contact monitoring